

COMBI-OVENS



1.06



1.10

Extendable hose stores on the right side of all combi-ovens for convenient cleaning



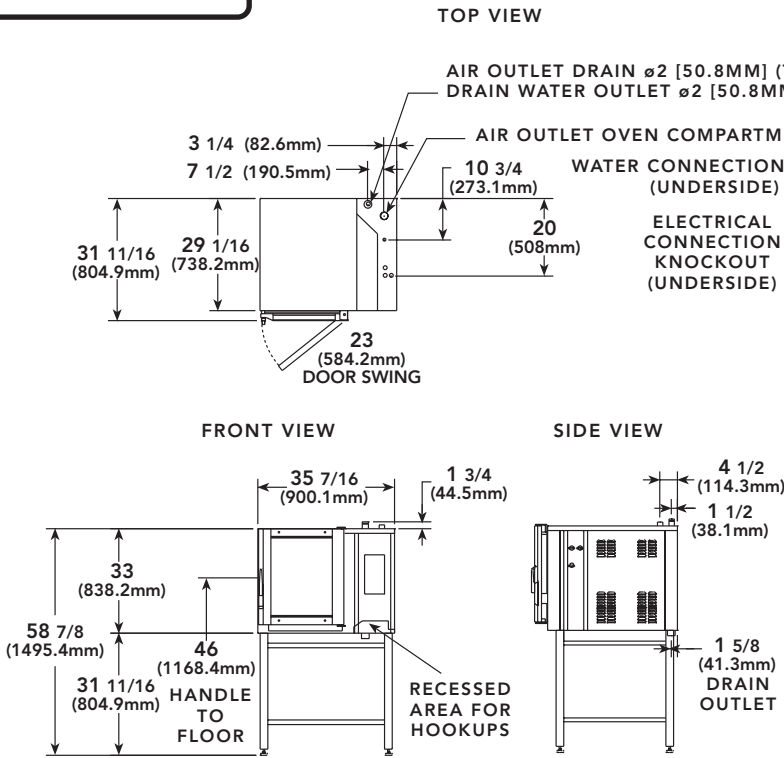
2.10

More than 195 programmable processes allow for flexible and diverse menu options

BKI's Combi-Ovens feature an integrated system of circulating hot air and injected steam, driven by a super-powered fan motor to ensure optimal cooking conditions across a broad spectrum. The result: perfectly prepared foods, ranging from beef and fish, to vegetables and rice and even baked goods. With memory storage of more than 195 programmable processes, BKI's combi-ovens can steam, bake, reheat and proof products within a single equipment 'footprint.'



1.06



ELECTRICAL SPECIFICATIONS

Voltage	208
Phase	3
Wires	3
Amps	22
Breaker	30
kW	9.0

DIMENSIONS

TABLE MODEL

Height	33" (838.2 mm)
Width	35 7/16" (900.1 mm)
Depth	31 11/16" (804.9 mm)
Floor Space	7.8 sq.ft (.73 m ²)
Shipping Weight	285 lb. (129.2 kg)
Shipping Cube	42.2 cu.ft (1.2 m ³)

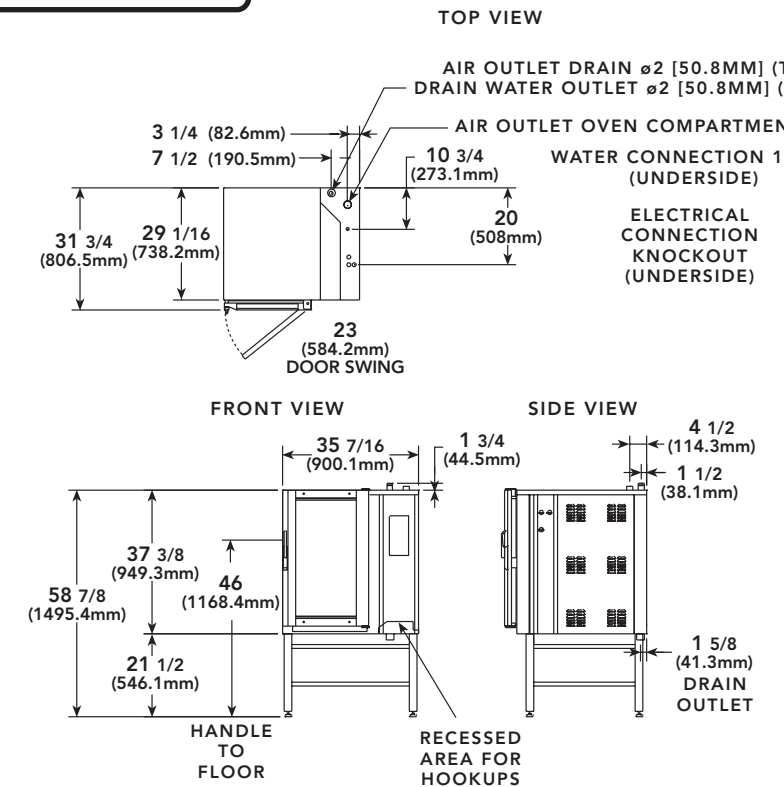
STAND MODEL

Height	58 7/8" (1495.4 mm)
--------	---------------------

PAN CAPACITY:

Steam Table Pan	
(6) full-size	2.50" (6cm)
Bun Pan	
(6) half-size	13" (33cm) x 18" (46cm)

1.10



ELECTRICAL SPECIFICATIONS

Voltage	208
Phase	3
Wires	3
Amps	42
Breaker	60
kW	15

DIMENSIONS

TABLE MODEL

Height	37 3/8" (949.3 mm)
Width	35 7/16" (900.1 mm)
Depth	31 3/4" (806.5 mm)
Floor Space	7.8 sq.ft (.73 m ²)
Shipping Weight	350 lb. (158.8 kg)
Shipping Cube	52.2 cu.ft (1.5 m ³)

STAND MODEL

Height	58 7/8" (1495.4 mm)
--------	---------------------

PAN CAPACITY:

Steam Table Pan	
(10) full-size	2.50" (6cm)
Bun Pan	
(10) half-size	13" (33cm) x 18" (46cm)



BKI Worldwide Headquarters

P.O. Box 80400 Simpsonville, SC 29680-0400 USA • Tel: 864-963-3471 • Toll Free: 1-800-927-6887
Sales Fax: 509-352-5350

BKI Europe (U.K.)

Tel: (44) 8950 8222

Fax: (44) 8956 0233

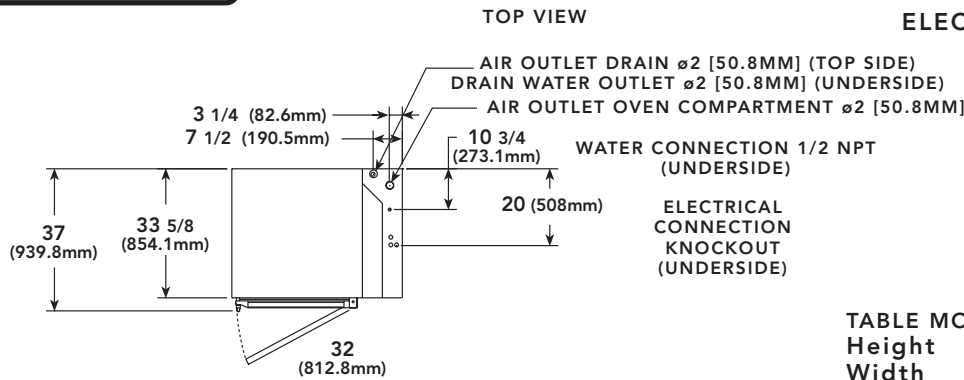
BKI Latin America

Tel: 954-442-0480

Fax: 954-442-0480



2.10



ELECTRICAL SPECIFICATIONS

Voltage	208
Phase	3
Wires	3
Amps	70
Breaker	90
kW	25

DIMENSIONS

TABLE MODEL

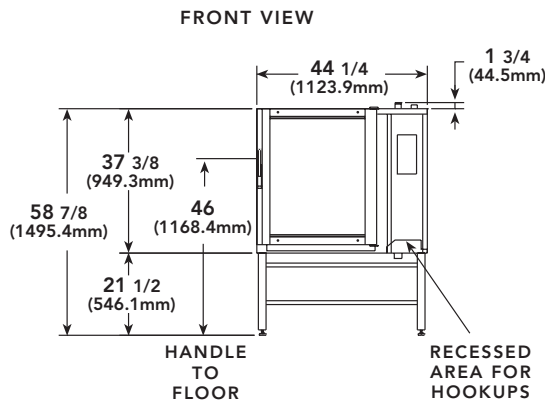
Height	37 3/8" (949.3 mm)
Width	44 1/4" (1123.9 mm)
Depth	37 (939.8 mm)
Floor Space	11.4 sq.ft (1.1 m ²)
Shipping Weight	455 lb. (206.4 kg)
Shipping Cube	52.2 cu.ft (1.5 m ³)

STAND MODEL

Height	58 7/8" (1495.4 mm)
--------	---------------------

PAN CAPACITY:

Steam Table Pan	(20) full-size 2.50" (6cm)
Bun Pan	(20) half-size 13" (33cm) x 18" (46cm)
Bun Pan	(10) full-size 18" (46cm) x 26" (66cm)



COMBI-OVEN FEATURES



Automatic Motor Brake
BKI takes extra measures to ensure operator safety with an automatic motor brake that is activated to stop the fan when the oven door is opened during operation.



Efficient Filter
An easy-to-remove filter efficiently catches fat particles during the cooking operation for superior baking results. Made of stainless steel and located in the ovens' filter housing system, the filter is dishwasher safe.



Hand Shower
Integrated hand shower ensures quick and easy cleaning with a flexible and extendable hose. Stored on the outside of the oven, the flexible hose is conveniently located for simple cleaning.



BKI Worldwide Headquarters

P.O. Box 80400 Simpsonville, SC 29680-0400 USA • Tel: 864-963-3471 • Toll Free: 1-800-927-6887
Sales Fax: 509-352-5350

BKI Europe (U.K.)
Tel: (44) 8950 8222
Fax: (44) 8956 0233

BKI Latin America
Tel: 954-442-0480
Fax: 954-442-0480



Specifications subject to change without notice.
© BKI L10077/12-01

1.06, 1.10, 2.10



COMBI-OVEN FEATURES

Safety Handle

BKI is serious about employee safety. With a two-step safety handle, the risk of scalding is reduced when oven door is opened.



Temperature Probe

The core temperature probe yields consistent readings for proper cooking results. To prevent unnecessary heat from damaging the temperature probe, the probe is stored on the outside of the oven for accurate performance.



Easy Cleaning

BKI manufactures equipment with a keen attention to detail such as rounded corners in the oven compartment for quick and efficient cleaning. With a polished stainless steel design, operators get the quality they come to expect from BKI.



BKI Worldwide Headquarters

P.O. Box 80400 Simpsonville, SC 29680-0400 USA • Tel: 864-963-3471 • Toll Free: 1-800-927-6887
Sales Fax: 509-352-5350

BKI Europe (U.K.)

Tel: (44) 8950 8222
Fax: (44) 8956 0233

BKI Latin America

Tel: 954-442-0480
Fax: 954-442-0480

